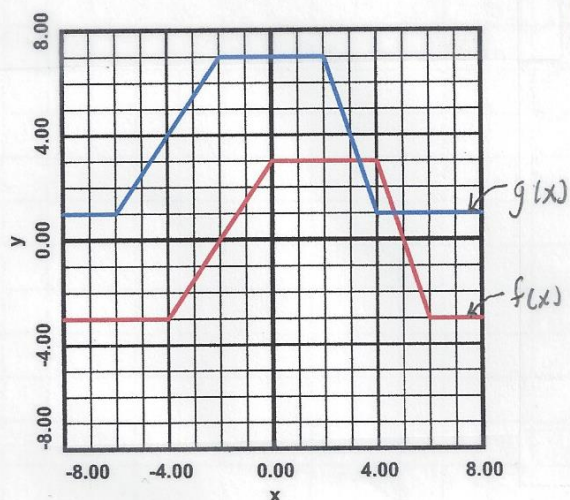


2A.7. Transformation of Functions

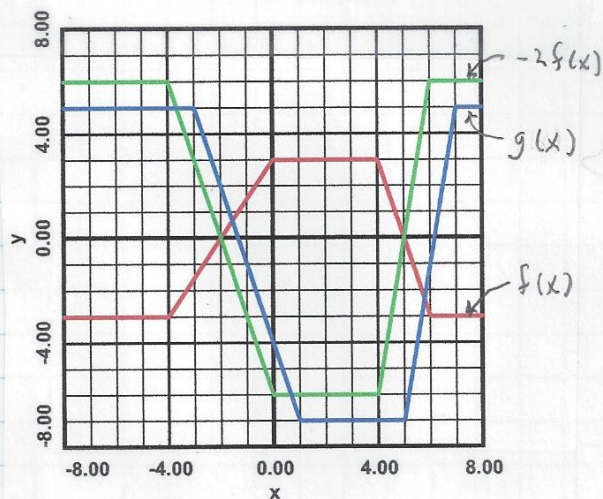
1 of 2

For Examples #1 through #3, given $y=f(x)$ (in red), graph the indicated function $y=g(x)$.

Example #1. $g(x) = f(x+2) + 4$



Example #2. $g(x) = -2f(x-1) - 1$



2A.7. Transformation of Functions

2 of 2

Example #3. $g(x) = f(2x+3) - 4$

