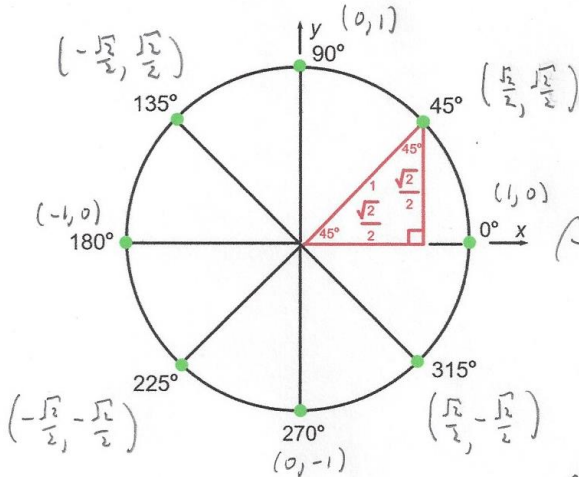


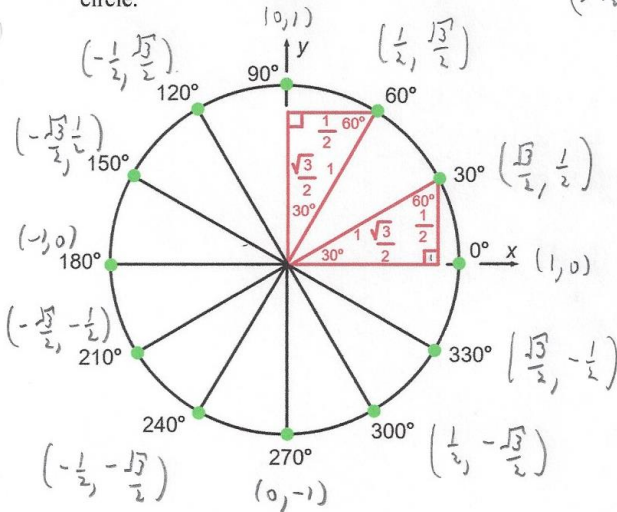
PRE-AP ALGEBRA 2

4A.3 CLASSWORK

- 1) Use the 45° - 45° - 90° triangle to label the (x, y) -coordinates of the points on the unit circle.



- 2) Use the 30° - 60° - 90° triangles to label the (x, y) -coordinates of the points on the unit circle.



- 3) Combine your results from problems 1 and 2 to label the (x, y) -coordinates of the points on the unit circle below.

